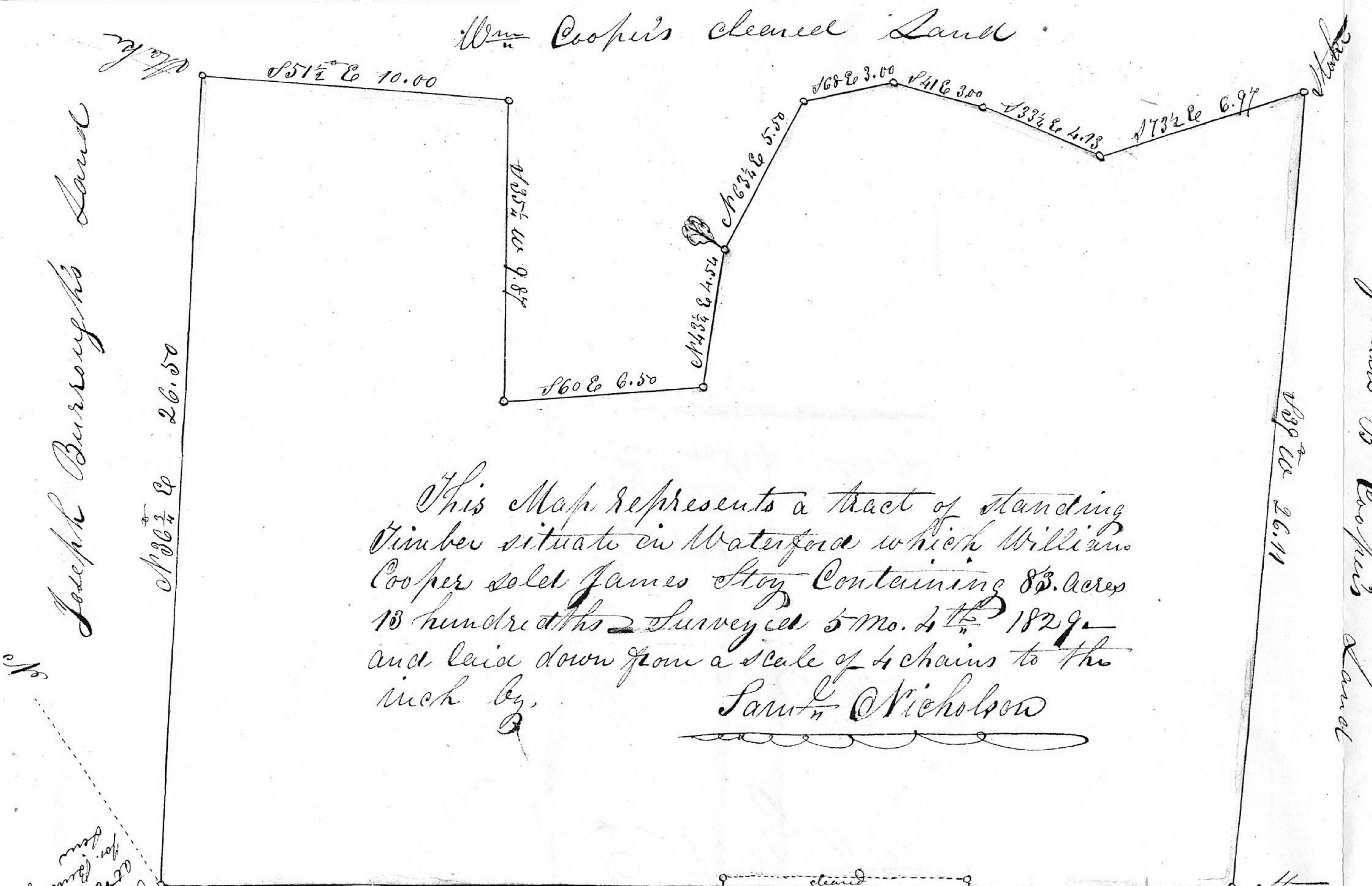


Wm Cooper's cleared Land



This Map represents a tract of standing  
 Timber situate in Waterford which William  
 Cooper sold James Stoy containing 83 acres  
 13 hundredths Surveyed 5 mo. 4<sup>th</sup> 1829  
 and laid down from a scale of 4 chains to the  
 inch by  
 Samuel Nicholson

Joseph Burrough's Land

Benjamin B Cooper's Land

Samuel Nicholson's Land

Benjamin B Cooper's Land

Draught

William Cooper

For  $83 \frac{13}{100}$  Acres of  
stump and Limber in  
the Township of Waterford

---

Sold the Timber  
to James [unclear]